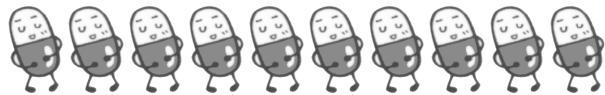




## How to use your medicine



## Ear Drops

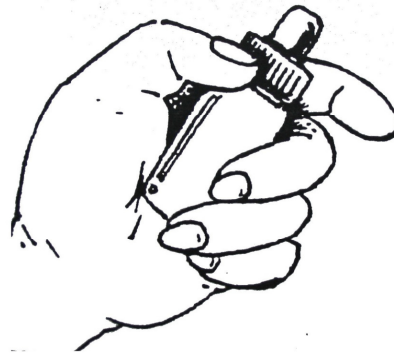


香港浸信會醫院  
Hong Kong Baptist Hospital

- (1) Wash hands, then gently clean and dry the ear canal as appropriate.



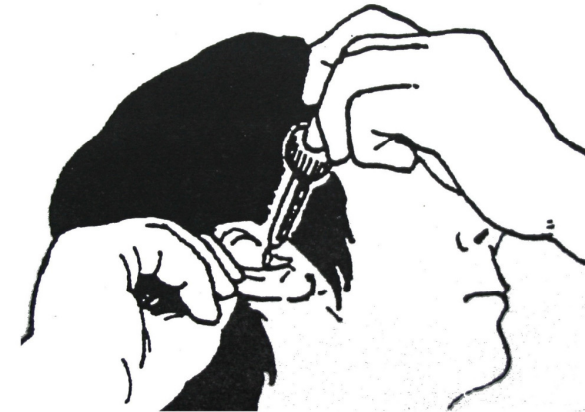
- (2) Hold the ear drop in the hand to make it warm.



- (3) Tilt your head

sideways, gently pull the ear lobe upwards and backwards.

- (4) Place the tip close to the ear canal and squeeze gently, so that one to three drops fall into the ear.



- (5) After the ear drop is being administered, please hold the

**position for a few  
minutes to prevent  
solution being  
drained out.**



**(6) Gently clean and dry  
the external ear as  
appropriate.**

**(7) Replace the cap  
immediately after use  
and store in a proper  
place.**



### **Attentions :**

- (I) Discard after 4 weeks  
of opening.**
- (II) Complete the whole  
course, unless under  
doctor's advise.**

藥物指引只供參考之用。

用藥應按照醫生指示。

如有疑問請向主診醫生或藥房職員查詢。

藥物查詢熱線: 23398964

The above information is for reference only .

If you have any problems, please consult your  
doctor or our pharmacy

Drug enquiry hotline: 23398964

香港浸信會醫院網址: [www.hkbh.org.hk](http://www.hkbh.org.hk)

HK Baptist Hospital website: [www.hkbh.org.hk](http://www.hkbh.org.hk)

05/2009