



DON'T FORGET

PRECAUTIONS 注意事項

DO NOT USE THE EYE OINTMENT IF IT IS EXPIRED OR BECOMES DISCOLOURED.

切勿使用已過期或變色的藥膏。

DO NOT SHARE YOUR EYE OINTMENT WITH OTHERS TO AVOID CROSS CONTAMINATION OR DELAY OF PROPER TREATMENT.

為防止傳播病菌及避免耽誤病情，切勿將自己的眼藥膏給予他人使用。

TAKE OFF CONTACT LENSES BEFORE APPLYING THE EYE OINTMENT.

請在使用眼藥膏前將隱形眼鏡除下。

FOR INTEREST IN INFORMATION & USAGE
INSTRUCTION FOR OTHER MEDICATIONS
如對其他藥物的資料及指引有興趣

PLEASE SCAN THE QR CODE
請掃描二維碼



DISCLAIMER 免責聲明

THE ABOVE INFORMATION PROVIDED ARE FOR REFERENCE ONLY. PLEASE CONSULT YOUR DOCTOR OR PHARMACY STAFF IF YOU HAVE ANY QUERIES.

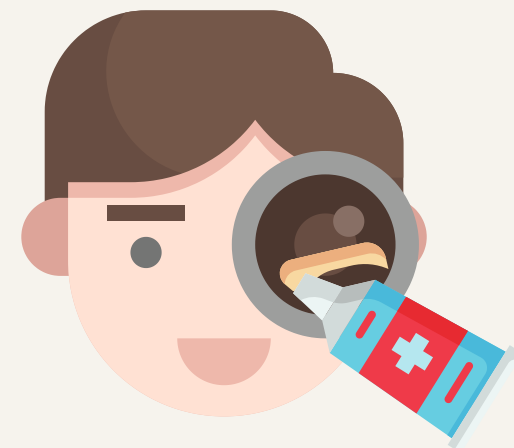
此資訊只供參考之用。
如有任何疑問，
請向主診醫生或藥房職員查詢。

[HTTPS://WWW.HKBH.ORG.HK](https://www.hkbh.org.hk)



HOW TO USE EYE OINTMENT
眼藥膏的使用方法

PHARMACY DEPARTMENT 2021
藥劑部2022



HOW TO USE EYE OINTMENT

眼藥膏的使用方法

STEPS ON USING THE EYE OINTMENT

使用眼藥膏的方法

1. WASH HANDS WITH SOAP.

用肥皂清洗手部。

2. USE A CLEAN COTTON BALL OR CLOTH TO CLEAN THE EYE GENTLY IF THERE IS ANY DRAINAGE OR CRUSTING IN THE EYES.

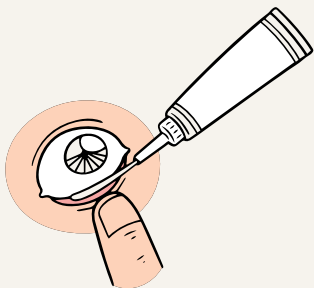
如眼睛有流眼水或結痂現象，請用乾淨的棉球或布輕輕將其拭去。

3. LEAN THE HEAD BACKWARDS OR LIE DOWN IN BED.

頭部向後仰或躺臥床上。

4. GENTLY PULL THE LOWER EYELID DOWNWARDS TO FORM A POUCH WHILE DIRECTING YOUR GAZE UPWARDS. SQUEEZE A SMALL STRIP OF OINTMENT INTO THE POUCH WITH THE OTHER HAND.

用手指輕輕把下眼瞼拉下成袋狀，眼向上望，手持藥筒，擠壓藥筒將眼藥膏滴入眼袋內。



5. CLOSE YOUR EYE, THEN GENTLY BLINK IT FOR A FEW TIMES OR SLOWLY MOVE YOUR EYE FROM SIDE TO SIDE FOR HALF A MINUTE IN ORDER TO HELP EVENLY DISTRIBUTE THE OINTMENT AROUND YOUR EYEBALL.

閉上眼睛，然後輕輕眨眼數次或慢慢左右移動眼睛半分鐘，以幫助將藥膏均勻分佈在眼球上。

6. AFTER KEEPING THE EYE CLOSED FOR 1 TO 2 MINUTES, USE A CLEAN TISSUE TO WIPE OFF ANY EXCESSIVE OINTMENT AROUND YOUR EYE.

閉上眼睛 1 到 2 分鐘後，用乾淨的紙巾擦去眼睛周圍多餘的藥膏。

7. INITIALLY YOUR VISION MAY BE BLURRED, BUT WILL SOON BE CLEARED BY BLINKING. TAKE CARE NOT TO RUB YOUR EYE.

NEVER DRIVE OR OPERATE MACHINERY WHEN VISION IS NOT YET RECOVERED.

初時你的視力可能會有點模糊，但很快就會通過眨眼來恢復。注意不要揉眼睛。

倘若視力尚未恢復，切勿駕駛或操作機器。



8. CLOSE THE CAP OF THE EYE OINTMENT IMMEDIATELY AFTER USE. DO NOT RINSE OR WASH THE TIP OF UNCAPPED TUBE.

用後必須立即蓋上筒蓋，切勿用清水洗濯沒有蓋著的藥膏。

9. REPEAT STEP 3 TO 7 IF THERE ARE MORE THAN ONE TYPE OF EYE OINTMENT TO BE APPLIED AT THE SAME TIME; THERE SHOULD ALWAYS BE A FEW MINUTES GAP IN BETWEEN APPLICATIONS.

如要同時使用多過一種眼藥膏，請重複步驟三至七；使用期間應相隔數分鐘。

ASK SOMEONE ELSE TO APPLY THE EYE OINTMENT FOR YOU IF IT IS POSSIBLE.

如有需要，請讓家人或其他人協助使用眼藥膏。

DO NOT LET THE TIP OF THE TUBE TOUCH THE EYE TO AVOID CONTAMINATION OR DAMAGE TO THE EYE

切勿讓筒嘴接觸到眼睛或眼蓋，以免損害眼睛及污染筒管