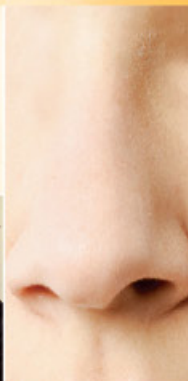
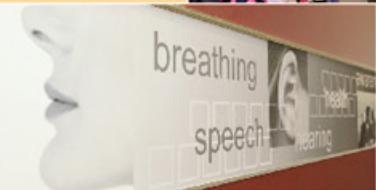


# Ear, Nose & Throat Centre

## 耳鼻喉科中心



## Introduction

The Hong Kong Baptist Hospital Ear, Nose and Throat (ENT) Centre, the first hospital based ENT Centre in Hong Kong, is dedicated to provide quality, comprehensive services for both paediatric and adult ENT healthcare needs.

Our experienced professional team includes otorhinolaryngologist, audiologist and speech therapist, and well-trained nursing team. They aim to provide comprehensive professional care for screening, diagnosis, treatment and rehabilitation in all aspects of ENT diseases by using state-of-the-art technology. Minimally invasive surgery is contemplated to achieve optimal treatment outcome, quick recovery and minimal surgical complication.



## Professional Services

### Ear (Otology)

- Neonatal hearing screening
- Paediatric and adult hearing test
- A comprehensive range of micro ear surgery
- Hearing restoration treatments - bone anchored hearing aid surgery
- Stapedectomy and ossiculoplasty

### Nose (Rhinology)

- Allergic rhinitis skin prick test
- Video-nasoendoscopy for examination of nasopharyngeal carcinoma
- A comprehensive range of nasal surgery
- Minimally invasive endoscopic sinus surgery
- Surgical treatment for snoring and obstructive sleep breathing disorder

### Throat (Laryngology)

- Voice and speech assessment and treatment
- Videostroboscopic examination of vocal cord for diagnosis and treatment of laryngeal carcinoma
- A full range of laryngeal surgery
- Treatment for vocal cord paralysis
- Swallowing disorder assessment and treatment

### Head and Neck Surgery

- All kinds of head and neck tumours including parotid disease

Ears that hear and eyes that see - the LORD has made them both.

Proverbs 20:12

## Facilities and State-of-the-Art Equipment

### Audiology & Speech Centre

- Videonystagmography
  - For assessment of inner ear balance function
- Evoked response audiometry
  - Objective assessment of cochlear nerve function for both paediatric and adult patients
- Hearing aid recommendation and fitting
- Tinnitus assessment and retraining therapy



### Allergic Rhinitis Skin Prick Test & Immunotherapy

- Diagnosis and treatment for refractory allergic rhinitis

### Video-stroboscopy

- Detecting subtle laryngeal pathologies including vocal cord polyp or early stage laryngeal carcinoma
- Fibreoptic flexible rhinolaryngoscopy
  - For assessment of laryngeal lesions

### Video-nasoendoscopy

- Assessment of subtle sinusitis, nasal tumour and nasopharyngeal carcinoma

### Oto-microscopy

- Detail of assessment of ear pathology and treatment

### Service Hours (By appointment only)

Monday, Tuesday, Thursday, Friday	9:30am - 1:00pm 3:00pm - 6:00pm
Wednesday	9:30am - 1:00pm
Saturday	9:30am - 3:00pm
Closed on Sunday and Public Holidays	

 香港浸信會醫院  
Hong Kong Baptist Hospital

Ear, Nose and Throat Centre  
7/F, Block B, 222 Waterloo Road, Kowloon, Hong Kong  
Tel : 2339 8722  
Fax : 2339 8727  
Email : entcentre@hkbh.org.hk  
Website : http://www.hkbh.org.hk

