

Mammography 乳房造影



Do good, O Lord, to those who are good, to those who are upright in heart.

[Psalms 125:4]

Full Field Digital Mammography

The Hong Kong Baptist Hospital is equipped with the state-of-the-art digital mammography unit - **Selenia Full Field Digital Mammography**. Digital mammography takes an electronic image of the breast and stores it directly in a computer, allowing the recorded data to be enhanced, magnified, or manipulated for further evaluation. This is especially helpful in evaluating women with dense breast tissue or breast implants.

When should I undertake mammography?

1. Women over the age of 40 are recommended to undertake mammography annually.
2. Those who have the following breast symptoms:
 - lumps
 - discomfort or pain
 - changes in appearance such as the outline or shape of the breast
 - changes in nipples, for instance the position of the nipple – pulled in or pointing differently; abnormal discharge or bleeding from the nipple
 - a rash or an 'orange-skin' appearance on or around the breast
3. Those who are considered to be at a higher risk due to the following factors:
 - Hormone replacement therapy
 - Family history of breast cancer
 - Early menarche or late menopause
 - Nulliparous women or women having their first child late
 - Previous history of certain benign breast diseases

Does breast screening save lives?

Breast cancer is the most frequently diagnosed cancer among women in Hong Kong. It can affect any women and if it is found at an early stage, treatment has the greatest chance of being successful. The best method of screening for breast cancer is by having mammography. A mammogram is an x-ray of your breasts using very low doses of radiation. It can detect most breast cancer 2 to 3 years before it can be felt.

Preparations

- Tell the radiographer before the test if there is a chance you may be pregnant.
- Do not use deodorant, talcum powder, creams or lotions on your breasts or underarms. These products leave a residue that can make your mammogram difficult to read.

Procedures

- You need to undress from the waist up. You are given a gown to wear.
- The female radiographer will position your breast to get it in the right spot for each x-ray.
- Your breast is squeezed between 2 flat surfaces. This may hurt, but it does not harm your breasts.
- There are at least 2 x-rays taken of each breast while each x-ray takes less than 10 seconds.
- If you have breast implants, more x-rays will be taken and the test will take longer time.
- Test results are sent to your doctor.

Talk to your doctor or nurse if you have any questions or concerns.

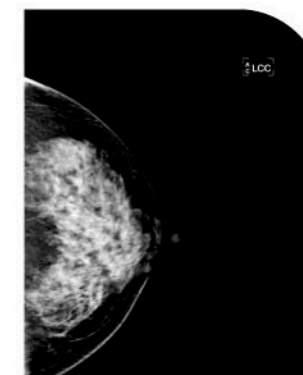
Does having a mammography hurt?

The radiographer positions each breast on the mammography unit and carefully compresses the breast in order to produce high-quality diagnostic image. Although the pressure is tight, it will only last for a few seconds. It may be uncomfortable for a brief time, but this is necessary so as to see lumps or changes in the breast tissue.

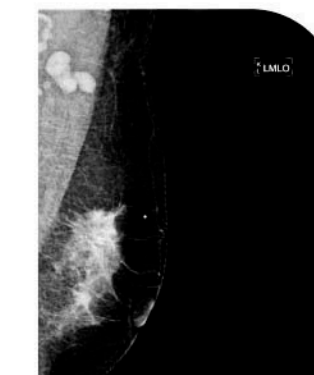
The entire procedure completes in about 10 minutes. The radiographer compresses and takes an x-ray of each breast, then repeats the procedure for the next view with different position.

When will you need to have Core Needle biopsy / vacuum assisted biopsy (Mammotome®) with the Prone Table Stereotactic system?

Once a breast lump or abnormality is detected, breast biopsy will be conducted using Core Needle biopsy or vacuum assisted core biopsy (Mammotome®) with the **Prone Table Stereotactic system**. This procedure involves taking sample tissue from the suspicious area to determine whether the breast lump is cancerous. This is usually done under local anaesthesia.



Normal Breast



CA Breast

Breast Examination Programme

Examination	Price (HK\$)
Bilateral Mammogram + Ultrasound	\$1,750
Bilateral Mammogram	\$1,200
Ultrasound	\$900
Unilateral Mammogram	\$900
Ductogram	\$4,200
Core needle biopsy	\$4,000
Vacuum assisted core needle biopsy (Mammotome®)	\$11,000

*Laboratory fee not included.

*Please bring along old films (if any) for comparisons.

*Charges are subject to change without prior notification.

Service Hours

Monday to Friday 9am to 5:00pm
 Saturday 9am to 1:00pm
 Closed on Sunday and Public Holidays



香港浸信會醫院

Hong Kong Baptist Hospital

Radiology Department

G/F, Block A, Waterloo Road, Kowloon, Hong Kong

Tel: 2339 8981

Fax: 2339 8990

Website: <http://www.hkbh.org.hk>



Approved by The Hong Kong Council of Social Service

獲香港社會服務界議會認可