

# Gastroenterology and Hepatology Centre

## 腸胃及肝臟內科中心



An anxious heart weighs a man down, but a kind word cheers him up.

[Proverbs 12:25]

### Introduction

Gastroenterology and Hepatology Centre of Hong Kong Baptist Hospital aims at offering high quality medical services for treating different kinds of digestive diseases. Obesity problems and digestive diseases become more and more common as a result of hectic and stressful life style, unhealthy diets and the lack of health awareness and exercises. An increasing number of Hong Kong people are suffering from various digestive diseases including indigestion, gastroesophageal reflux disease, colorectal cancer and liver disorder. In view of this, the Centre is led by experienced specialists, through the use of latest technologies such as endoscopic ultrasonography and working with other related specialties, such as minimally invasive surgery and radiology, to provide a cutting edge and holistic treatment for patients suffering from complex digestive diseases.

### Scope of Services

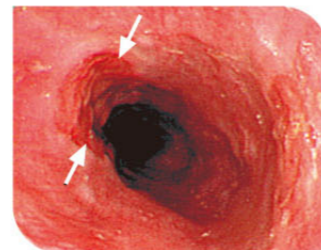
- Diagnosis and treatment for various gastrointestinal diseases – including long-term epigastric pain, gastroesophageal reflux disease, chronic diarrhea and constipation
- Diagnosis and treatment for hepatitis and various liver diseases – including chronic hepatitis B and C infection, fatty liver disease, assessment of liver cirrhosis and related complications
- Advanced endoscopic diagnosis and treatment for various digestive diseases – including diagnosis of digestive cancers and lung cancer, endoscopic resection of early gastrointestinal tract tumours, endoscopic placement of metallic stent to relieve digestive tract and biliary tract obstruction, diagnosis and treatment of small bowel diseases
- 24-hour urgent endoscopic treatment for various gastrointestinal emergencies – including treatment of acute peptic ulcer bleeding, treatment of acute cirrhosis related variceal bleeding, acute lower gastrointestinal tract bleeding, foreign body ingestion and endoscopic treatment of acute cholangitis
- Comprehensive screening for various digestive cancers – including early gastric cancer, colonic cancer and pancreatic cancer
- Latest noninvasive, painless oesophageal, small bowel and large bowel capsule endoscopy examination

### Equipments and Facilities

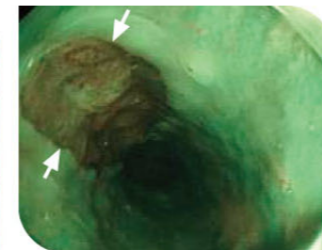
The Centre integrates with the Endoscopy and Endosonography Unit (EEU) of the Hospital to offer one-stop and comprehensive examination to patients. EEU has always been keeping abreast with the latest advances and technologies in endoscopy, like the adoption of the high definition video endoscopy system and narrow band imaging system, the most advanced Endoscopic Ultrasonography (EUS) system in Asia, as well as the latest capsule endoscopy and single balloon enteroscopy system for diagnosing and treating complex small bowel diseases.

#### (1) Narrow Band Imaging (NBI) System

Narrow Band Imaging is an advanced technology in endoscopy. During examination, doctors observe the alimentary tract by both white light and narrow band light sources which reveal the minute changes in the mucous membrane and vasculature. It facilitates the detection of early pathological changes and cancer.



The lesion in oesophagus is not obvious when observation is done with white light.



The lesion in the oesophagus is clearly seen under the observation with NBI.

#### (2) Endoscopic Ultrasonography (EUS)

EUS combines the functions of endoscopy with high frequency internal ultrasound examination. The ultrasound instrument is put deep inside the patient's body and can be directed closely to the suspected lesion. Therefore, the diagnostic accuracy is much higher than the other imaging technologies, especially in the study of pancreatic, biliary and gastrointestinal tract lesions. EUS is now widely used in various diseases including digestive diseases, surgical and oncological diseases, as well as chest medicine (lung cancer staging).

Under real time EUS monitoring, experienced endoscopists can perform Fine Needle Aspiration (FNA) to obtain tissues from organs for cytological and histological analysis to confirm the diagnosis of early cancer or metastases. It is particularly useful in staging of cancer diseases.



Advanced endoscopic ultrasonography system



EUS confirms the diagnosis of gallbladder sludge disease and cholecystitis

#### (3) Cap-assisted Colonoscopy Examination

The Centre have pioneered the use of an innovative cap-assisted technique in performing colonoscopy examination. The technique is shown by multiple researches to be useful in the diagnosis of colonic polyp diseases, and it is especially helpful in discovering lesions located in poorly accessible regions of the colonic wall. It does not only reduce the examination time, but also improves the colonic polyp detection rate and procedure completion rate.



Cap-assisted colonoscopy



Polyp behind colonic fold could be easily identified

### Colorectal Cancer Screening

Items	Out-patient List Price(\$)	H.A. Discount Price(\$) <sup>★</sup>
Nurse Assessment		
Doctor's Consultations (2 visits)	\$7,500 <sup>##^</sup>	\$5,500 <sup>##^</sup>
Colonoscopy		
Medical Report		
Polypectomy (Selective)	\$2,500 <sup>*^</sup>	\$2,500 <sup>*^</sup>

\* Doctor's charge is included

# Extra charges will be applied after office hours

^ Doctor's charge excludes the charges of other procedures (e.g. Polypectomy and Haemostasis) and medication (Including H.A. case).

★ Only patients who are referred and booked directly through H.A. to the Gastroenterology and Hepatology Centre are entitled to the discount price. The Centre is only responsible for the procedure. While H.A. is responsible for the follow-up before and after the procedure.

All of the above prices are applicable to outpatient examination only. All prices are subject to change without prior notice.



### Service Hours (By appointment only)

Monday - Friday 10:00am - 1:00pm  
3:00pm - 6:00pm  
Saturday 10:00am - 1:00pm  
Closed on Sunday and Public Holidays

 香港浸信會醫院  
Hong Kong Baptist Hospital

Gastroenterology and Hepatology Centre  
G/F, Block D, 222 Waterloo Road, Kowloon,  
Hong Kong  
Tel : 2339 8064  
Fax : 2339 8807  
Website: <http://www.hkbh.org.hk>

 caringorganisation  
Awarded by The Hong Kong Council of Social Service  
香港社會服務發展局